

Canterbury Cathedral Conference Centre

Minimally Invasive Thyroid Surgery (East Kent University Hospitals Trust)

Mr I Myles Black

MB, BCh, BAO, FRCS Otol, FRCS ORL-HNS

Consultant ENT / Thyroid / Head & Neck Surgeon

East Kent University Hospitals Trust

ELD

01/11/2011



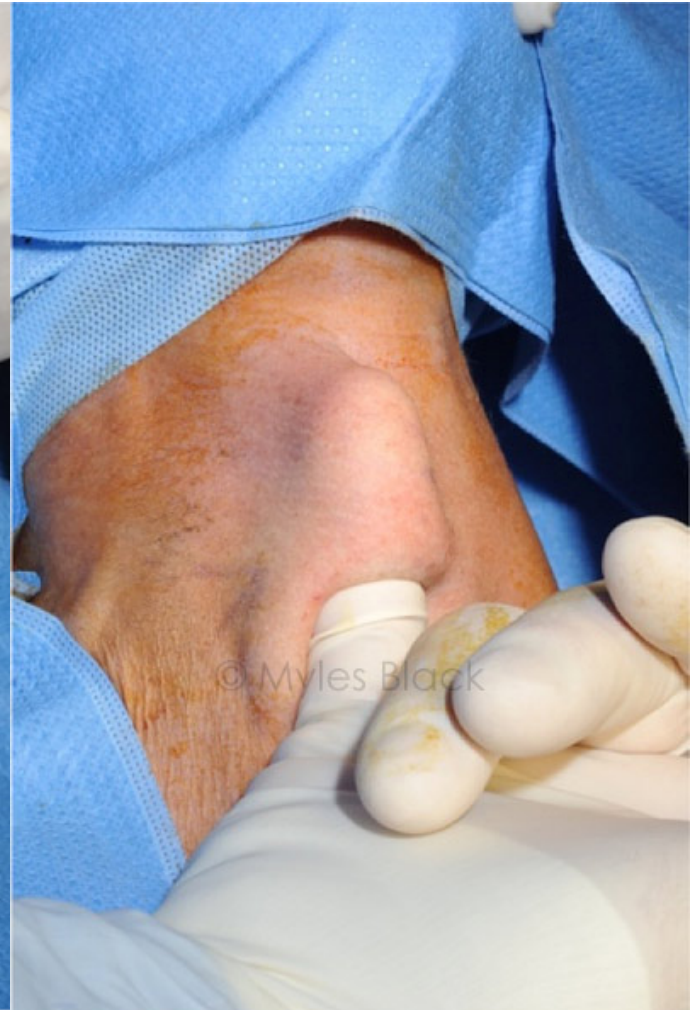
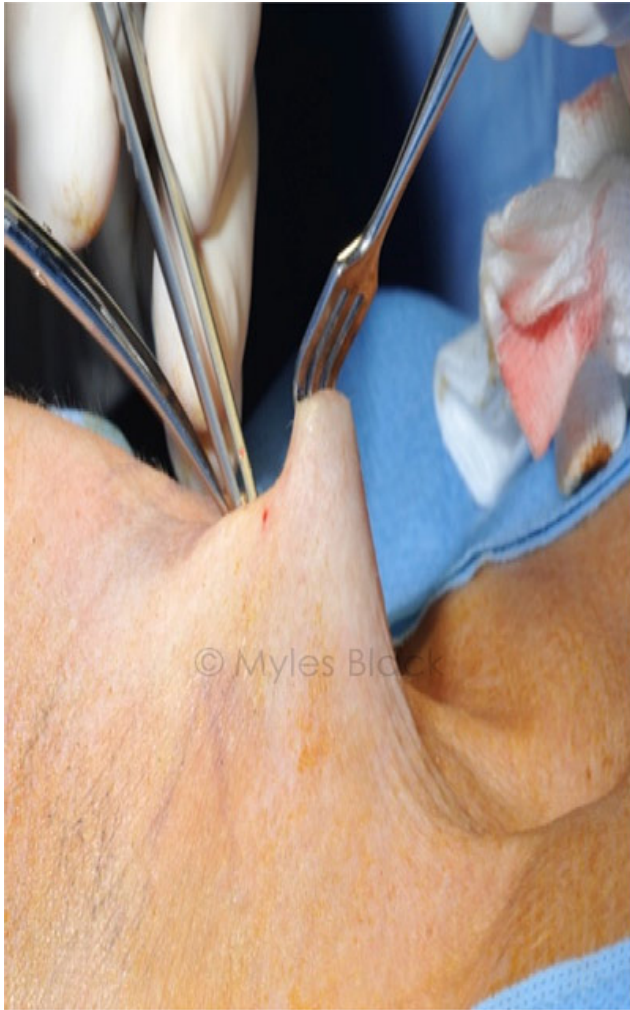
ELD
01/11/2011



ELD
01/11/2011



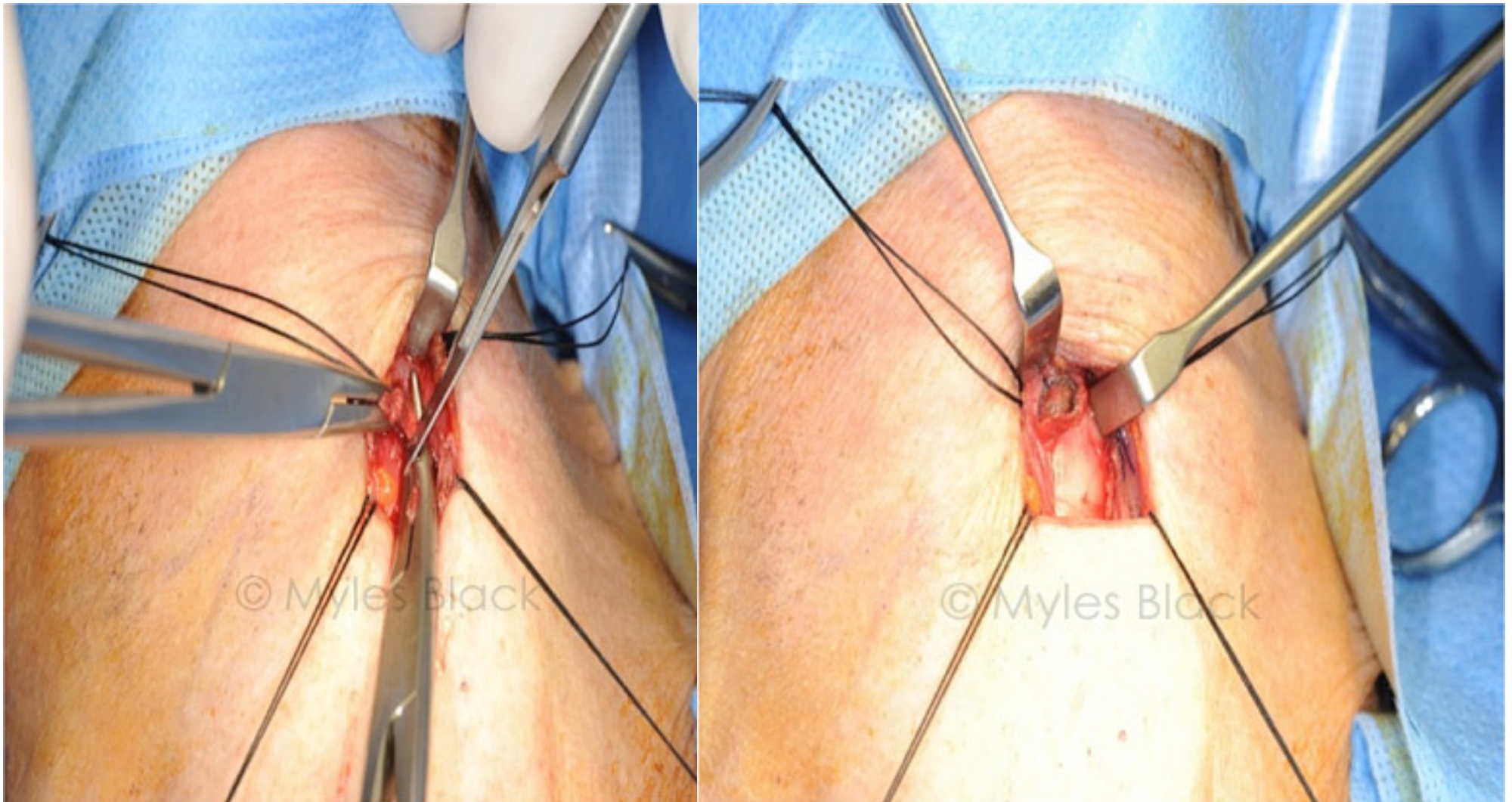
ELD
01/11/2011



ELD
01/11/2011



ELD
01/11/2011



ELD
8/12/2011
1 month post
surgery



ELD
16/06/2012
7 months post surgery



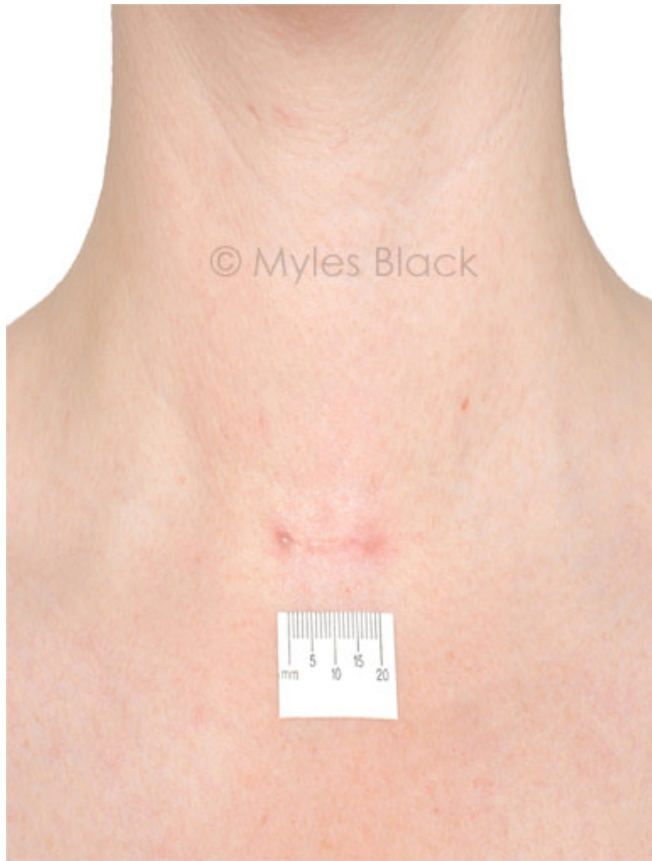
ELD
16/06/2012
12 months post surgery



SW

8/12/2011

1 month post surgery



SW

14/6/2012

7 months post surgery



SW

08/01/2013

14 months post surgery



GW
14/6/2012
7 months post
surgery



GW
08/01/2013
14 months post
surgery

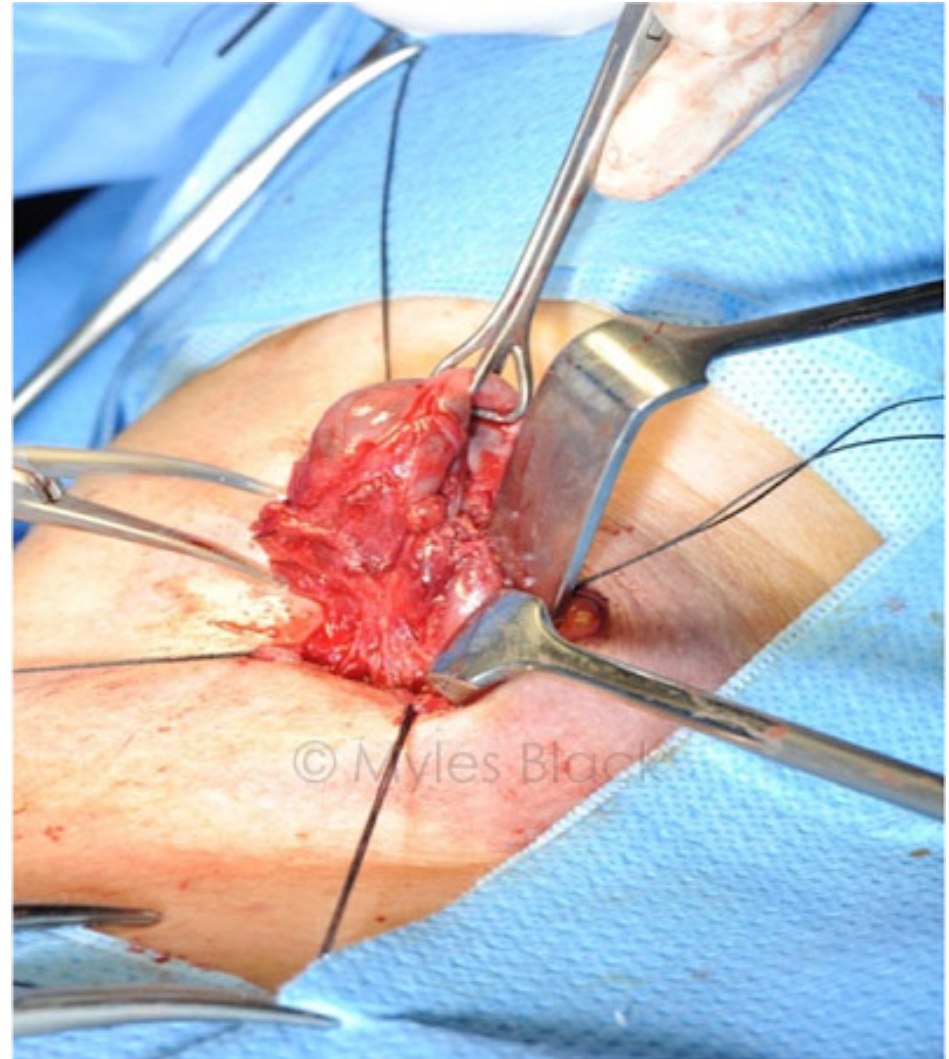


MBlack 25/01/2013

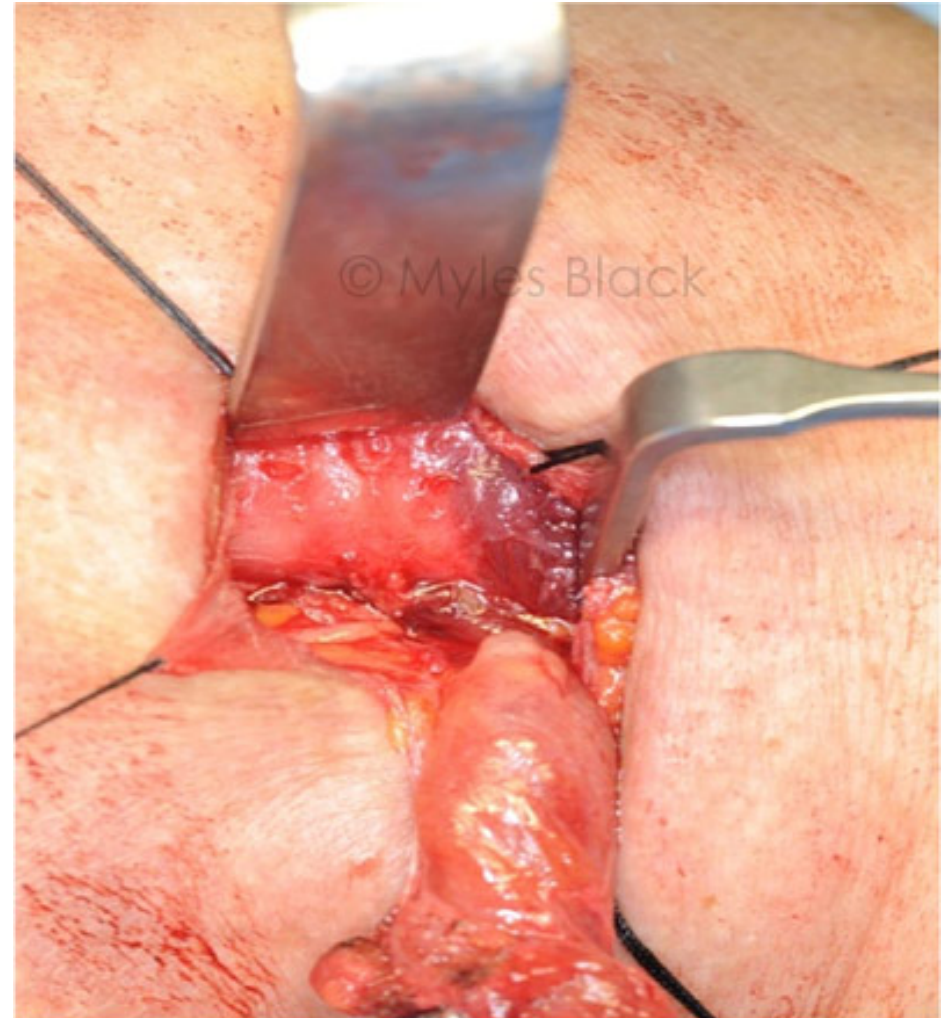
TM
01/11/2011



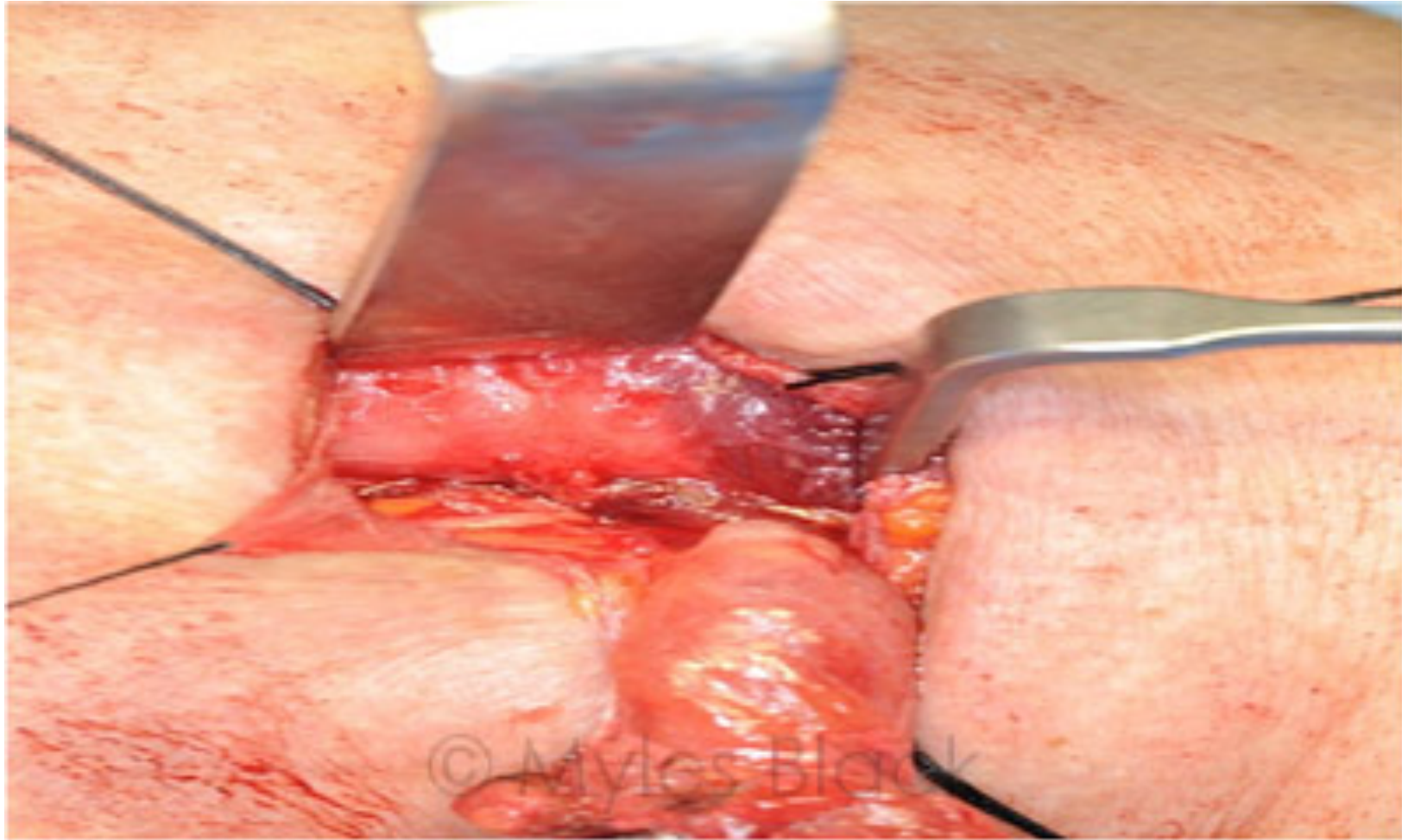
PG
01/11/2011



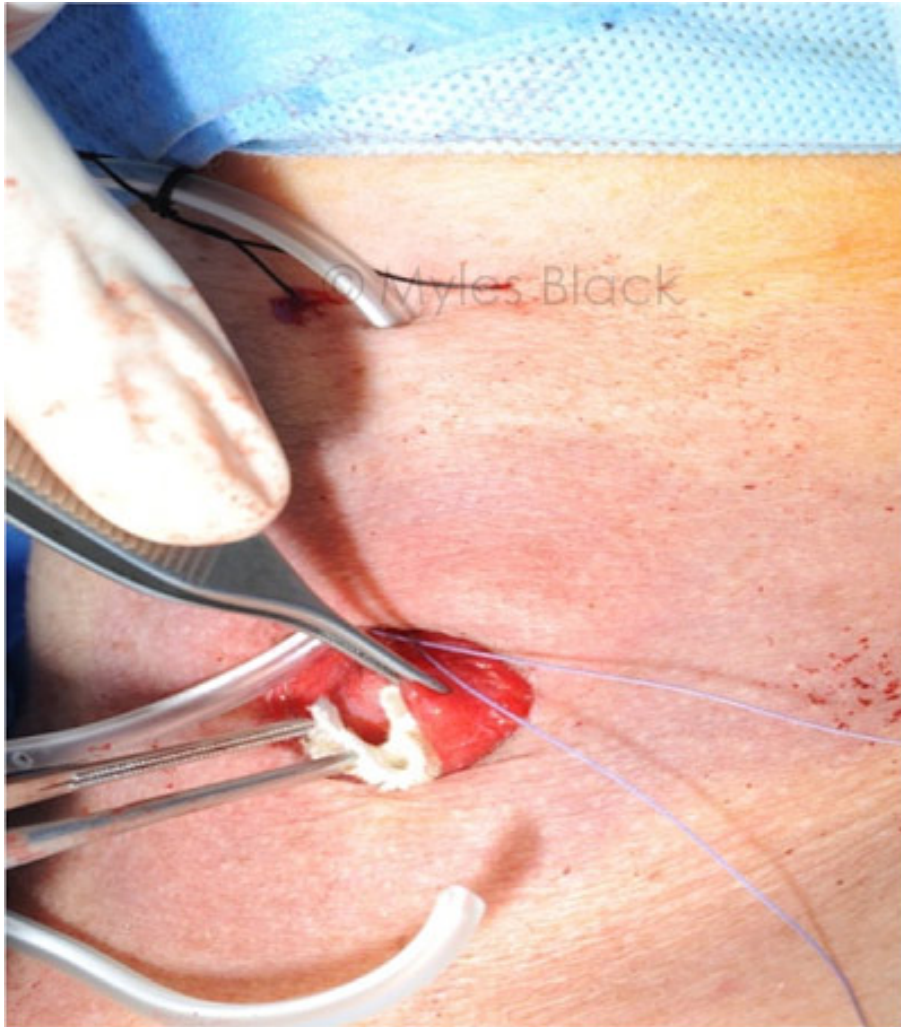
PG
01/11/2011



PG
01/11/2011



PG
01/11/2011



PG

01/11/2011



PG

8/12/2011

1 month post surgery



PG

8/12/2011

7 months post surgery



PG
3/1/2013
13 months post
surgery



DA

27/10/2011

1 month post
surgery



MBlack 25/01/2013

DA

17/4/2012

7 months post
surgery



MBlack 25/01/2013

DA
4/9/2012
12 months post
surgery

